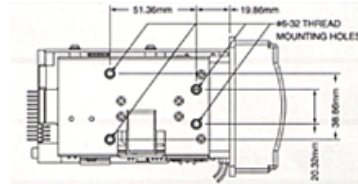
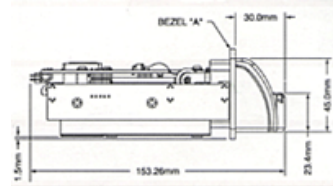
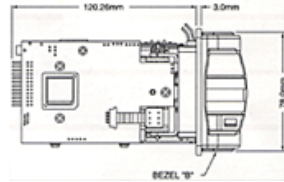
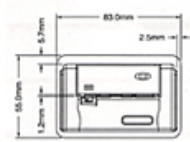


MSR900 Series

Motorized Magnetic Card Reader



Specification	
Electrical	
Operating Voltage	+12VDC \pm 10%
Operating Current	140mA idle, 240mA with motor on, Max 1.0A when motor startup
Communication	RS232 (TTL optional) Transparent direct data for IC card (optional)
Power supply	120VAC-12VDC, 350mA regulated 230VAC-12VDC, optional
Ripple	50mVpp or less
Dielectric	500VDC for 1 minute
Mechanical	
Material	ABS 94V-0, Aluminum extrusion/Die-cast
Weight	Approx. 300g
Dimension	153Lx83Wx55H mm
Operation	DC Motor driven, Landing contact of IC card
Environment	
Operation	-10 to 55°C, 10 to 85% humidity
Storage	-30 to 70°C, 10 to 90% humidity
Agency Approval	
Rating	FCC class A, CE class A, UL, cUL
Performance	
Read card format	Track 1 Track 2 Track 3
Bit density	210 bpi 75/210 bpi 210 bpi
Coercive force	Read 300-4000 Oe Magnetic Stripe
Jitter card	\pm 15% Interval & Sub-interval
Low Amp. card	60%
Read IC Card	ISO 7816 & EMV(optional)
Card thickness	0.2-1.2mm
Card travel speed	15-18ips
Error rate	Read < 0.5%
MTBF	100,000 Hours
Head life	Min. 500K pass life, 1M life optional

Model Configuration						
Model	Output	IC Card	Track			Shutter
			1	2	3	
MSR900-338B	RS232	--	R	R	R	--
MSR910-33AB	TTL	--	R	R	R	-
MSR901-33AB	RS232	R	R	R	R	-
MSR911-33AB	TTL	R	R	R	R	-
MSR900-33AB	RS232	--	R	R	R	-

Interconnection	
Cable	5 feet, DB9 connector
DB9 connector pin assignment	
1, 4, 6	Short
2	TXD / MSR900 transmit data
3	RXD / MSR900 receive data
5	Circuit ground
7, 8	Short
9	--
Default : 9600, 8bit per character, none parity, 1 stop bit	